

# Human IgG1 Isotype Control(Anti-RSV)

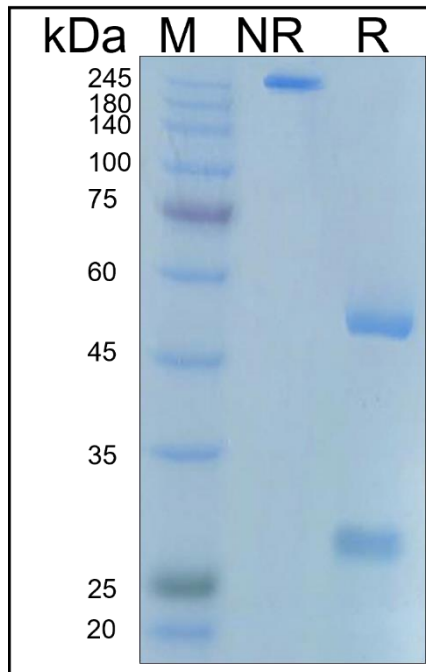
## Product Information

<b>Product Name</b>	Human IgG1 Isotype Control(Anti-RSV)
<b>Storage temp.</b>	Store at +4°C short term. Store at -20°C or -80°C long term, avoiding freeze/thaw cycles.
<b>Catalog# / Size</b>	<b>GM-47471AB-1mg / 1 mg</b> <b>GM-47471AB-5mg / 5 mg</b> <b>GM-47471AB-25mg / 25 mg</b> <b>GM-47471AB-50mg / 50 mg</b> <b>GM-47471AB-100mg / 100 mg</b>

## Antibody Information

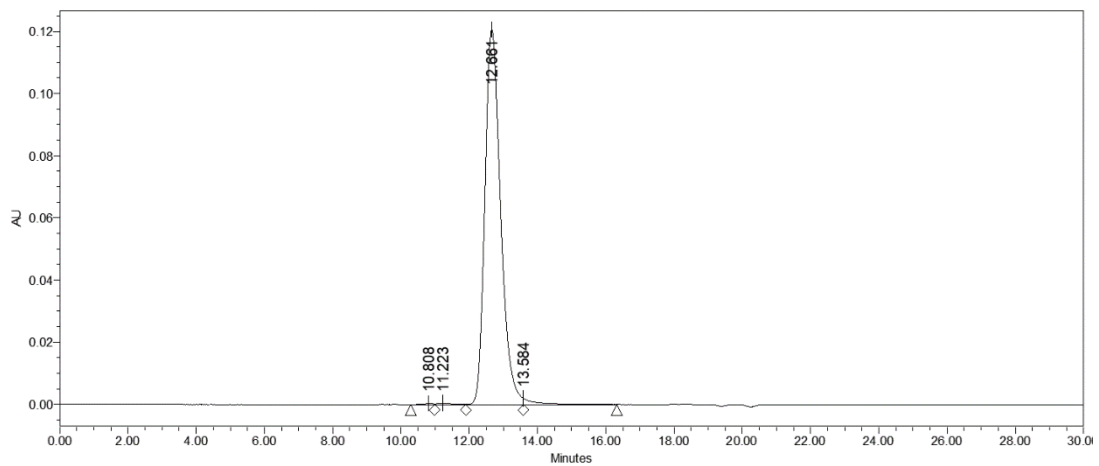
<b>Target</b>	RSV, Respiratory Syncytial Virus
<b>Antibody Type</b>	Monoclonal
<b>Isotype</b>	/
<b>Clone</b>	Palivizumab
<b>Expression System</b>	CHO
<b>Aggregation</b>	< 5% as determined by SEC-HPLC
<b>Purity</b>	> 95% as determined by SDS-PAGE
<b>Endotoxin</b>	< 1 EU/mg, determined by LAL gel clotting assay
<b>Sterility</b>	0.2 $\mu$ m Filtered
<b>Antigen</b>	Respiratory Syncytial Virus(RSV) F protein Respiratory Syncytial Virus(RSV) F protein
<b>Conjugate</b>	Unconjugated
<b>Application</b>	Negative control
<b>Alternative Names</b>	/
<b>Description</b>	/
<b>Formulation</b>	Dulbecco's phosphate-buffered saline, pH 7.4

## SDS-PAGE



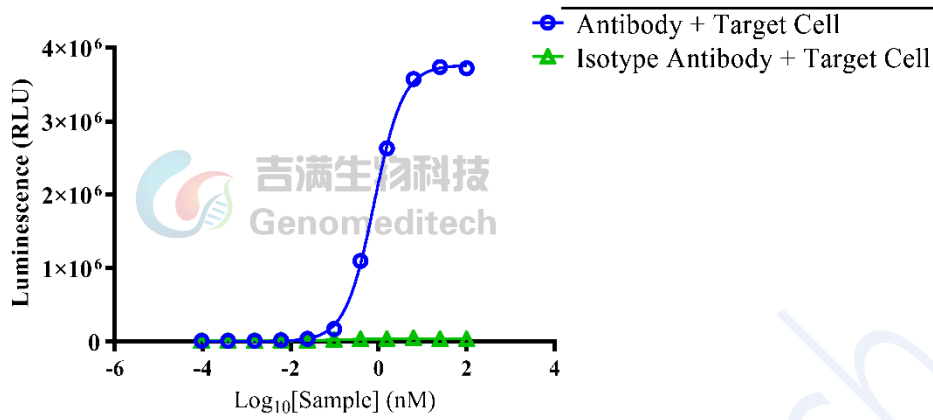
On SDS-PAGE under reducing (R)/non-reducing(N-R) condition. The gel was stained overnight with Coomassie Blue. The purity of the protein is greater than 95%.

## SEC-HPLC

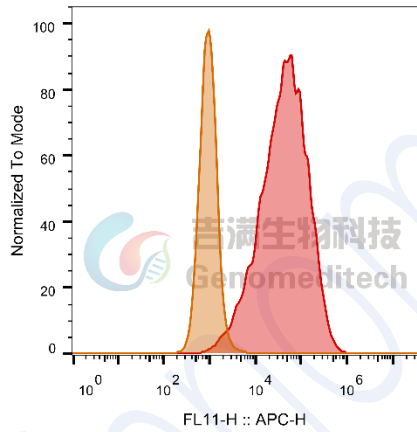


The purity of this product is more than 95% verified by SEC-HPLC.

## Bioassay



## Flow cytometry



SampleID	Geometric Mean : FL11-H
CHO-K1 Human_IgG1+APC-2nd ab	953
H_CD32B aAPC CHO-K1 Human_IgG1+APC-2nd ab	40734